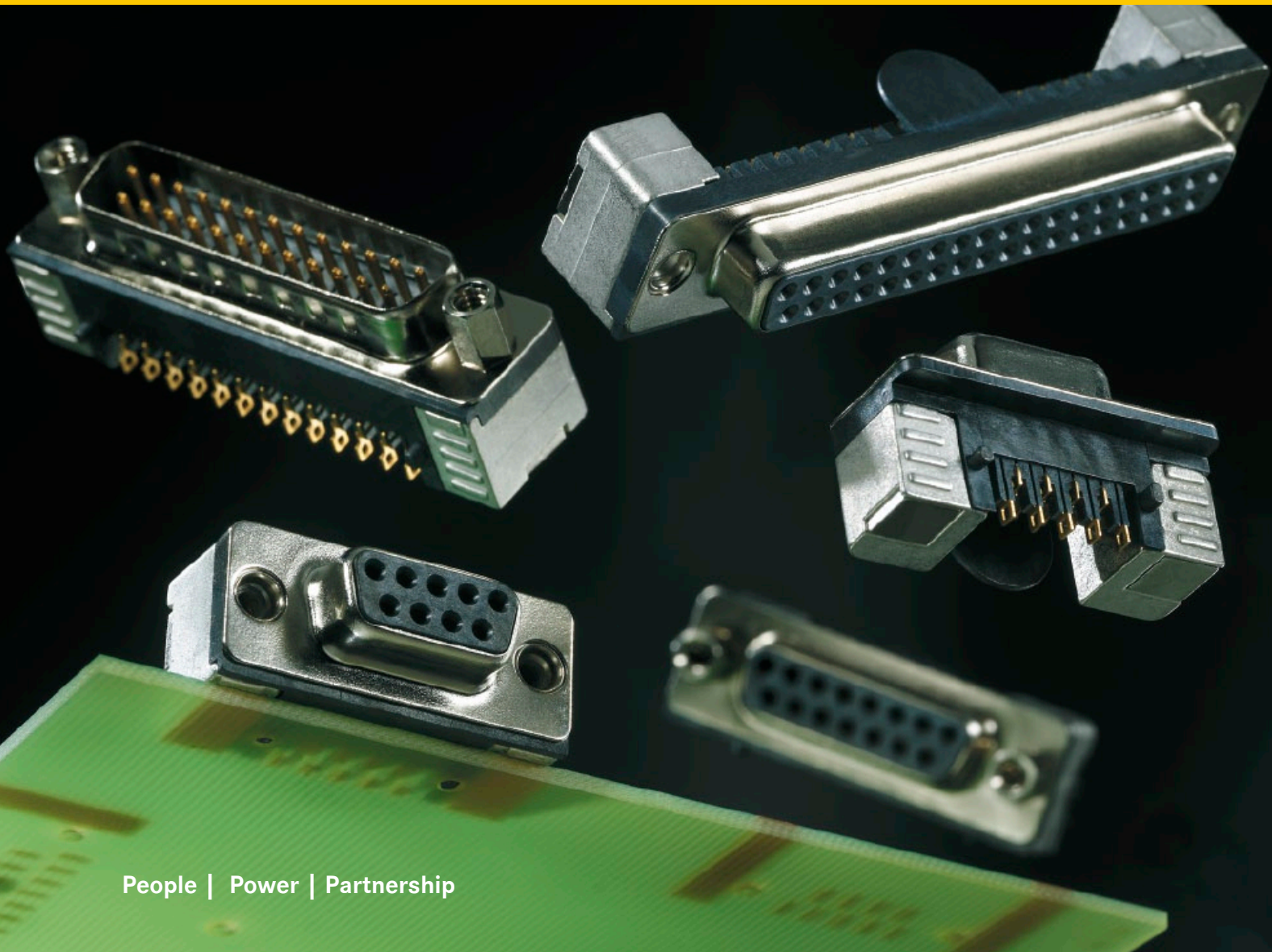




Pushing Performance

HARTING Subminiature D SMT



People | Power | Partnership

48 h Free Sample Service



People | Power | Partnership

HARTING
 catalogue-information-system
HARKIS® www.HARKIS.HARTING.com

Order your Subminiature D SMT samples free of charge.

HARTING – Subminiature D SMT: Whole range from 9 to 37 pole

The new **HARTING** Subminiature D SMT connector series has been optimized with a view to reliable process execution and a long service life. The SMT terminals' coplanarity is a maximum of 0.1 mm, and the cast iron bases guarantee perfect soldering. The black insulating housing simplifies camera recognition, and the large, level surface is ideal for use with common Pick-and-Place vacuum applications. An open terminal area makes it possible to inspect the soldered connection and also improves heat dissipation. The rectangular D-Sub SMT connectors from **HARTING** are available in both standard and low-profile versions, with 9 to 37 contacts and a large selection of hardware in M3 or 4-40 UNC.



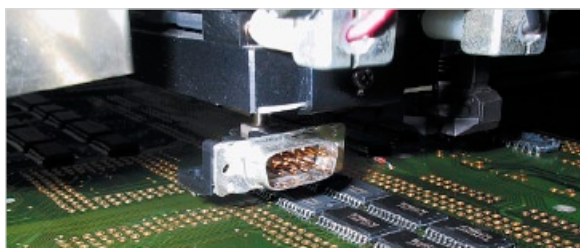
Subminiature D SMT range

Identification	No. of contacts	Performance level 2*	
Male connectors, standard version Reel packaging 140 pieces	9	09 55 166 68xx 741	<p>Standard version</p>
	15	09 55 266 68xx 741	
	25	09 55 366 68xx 741	
	37	09 55 466 68xx 741	
Female connectors, standard version Reel packaging 140 pieces	9	09 55 156 66xx 741	
	15	09 55 256 66xx 741	
	25	09 55 356 66xx 741	
	37	09 55 456 66xx 741	
Male connectors, low profile version Reel packaging 160 pieces	9	09 55 166 68yy 741	<p>Low profile version</p>
	15	09 55 266 68yy 741	
	25	09 55 366 68yy 741	
	37	09 55 466 68yy 741	
Female connectors, low profile version Reel packaging 160 pieces	9	09 55 156 66yy 741	
	15	09 55 256 66yy 741	
	25	09 55 356 66yy 741	
	37	09 55 456 66yy 741	

xx: Please insert 11 for flange thread M3, 12 for flange thread 4-40 UNC, 33 for fitted screw locks M3, 13 for fitted screw locks 4-40 UNC, 21 for non-removable fitted screw locks M3 and 22 for non-removable fitted screw locks 4-40 UNC.

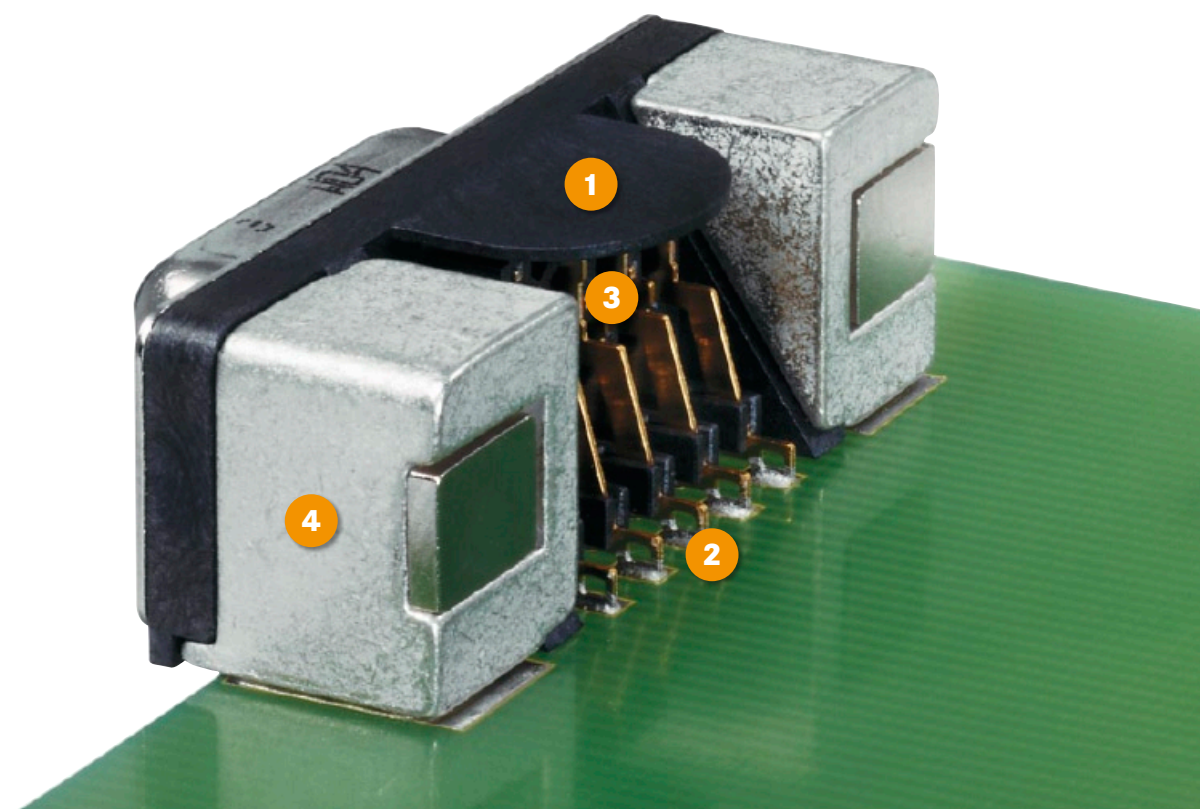
yy: Please insert 15 for flange thread M3, 16 for flange thread 4-40 UNC, 18 for fitted screw locks M3, 17 for fitted screw locks 4-40 UNC, 19 for non-removable fitted screw locks M3 and 20 for non-removable fitted screw locks 4-40 UNC.

*: Other performance levels are available on request.



D-Sub in Pick & Place machine equipped with vacuum nozzle

Fit for your SMT line



1 Large flat area

- Optimised for the use of a 10 mm round vacuum pipette.
- Allows to keep Pick & Place fastest speed.

2 Lead frame stamped contacts

- High precision assembling process, which provides 0.1 mm co-planarity.

3 Open rear side

- Ideal for heat distribution.
- Ideal for visual inspection control.

4 Die cast brackets

- Safe retention force for mating/unmating operations when the connector is not panel mounted.
- Ridges allow to reach more than 500 N retention force per bracket.
- Ensure antitopling, centre of gravity optimised



Pushing Performance

www.HARTING.com